

2014 CROP AND LIVESTOCK REPORT



COUNTIES OF INYO AND MONO AGRICULTURAL COMMISSIONER'S OFFICE

207 W SOUTH STREET

BISHOP, CA 93514

2014 Crop and Livestock Report

CONTENTS:

Summary of the Divisions of the Agricultural Commissioner's Office.....1
 Letter from the Commissioner.....3

AGRICULTURAL STATISTICS INYO COUNTY

General Information.....4
 Livestock/Livestock and Poultry Products.....6
 Fruit & Nut/Vegetable Crops.....7
 Field Crops/Nursery Crops/Apiary.....8
 County Summary.....9

AGRICULTURAL STATISTICS MONO COUNTY

General Information.....10
 Livestock/Livestock and Poultry Products.....12
 Fruit & Nut Crops.....13
 Field Crops/Forest Products.....14
 County Summary.....15

COMBINED STATISTICS INYO and MONO COUNTIES

Comparison/30 Year Comparison.....16
 Certified Farmer's Market/Sierra Nevada
 Runoff Chart.....18
 Sustainable Agriculture/Outreach Program....19
 Weights and Measures Enforcement.....20
 Owens Valley Mosquito Abatement.....21

Measures Departments

◆
Eastern Sierra Weed Management Area

◆
Owens Valley Mosquito Abatement Program

Staff:

Agricultural Commissioner / Director of Weights and Measures
Nathan Reade

Supervising Agricultural Biologist
Oliver Hardwick

Ag/Weights & Measures Inspector II
David Miller

Account Technician II
Jennifer Sarten

Field Technician III – Weed Management
Carlos Paz

Field Assistant – Weed Management
Walter Davison
Scott Gadea
Nelson Sanchez

Manager / Owens Valley Mosquito Abatement Program
Chris Wickham

Mosquito Control Technicians
Casey Freeman
Bruce Mack
Robert Miller

Cover: Cattle Grazing in the Antelope Valley, Mono County



COUNTIES of INYO and MONO AGRICULTURAL COMMISSIONER'S OFFICE

The mission of the Inyo and Mono Counties Agricultural Commissioner's Office is to promote and protect the agricultural industry of the counties, protect the environment, and to ensure the health and safety of all of its citizens. The department is also responsible for fostering confidence and equity in the marketplace.

The following are the main program areas:

HUMAN SAFETY AND ENVIRONMENTAL PROTECTION

We protect the health and safety of all Inyo/Mono residents, its agricultural industries and its environment with a series of comprehensive regulatory programs designed to prevent the introduction of exotic pests and to ensure the safe use of pesticides. The five programs that exist to achieve these goals include:

- Pest Exclusion
- Pest Detection
- Pest Eradication
- Pest Management
- Pesticide Enforcement

CONSUMER PROTECTION AND PRODUCT QUALITY

Product quality programs are designed to ensure the production and sales of quality eggs, honey, fruits, vegetables, and nursery and seed products. Quality standards that these programs ensure include maturity, grade, size, and weight. Packaging and labeling are also examined to ensure consumer expectations are met. The six programs include:

- Fruit and Vegetable Quality Control
- Organic Food Production
- Egg Quality Control
- Certified Farmers' Markets
- Nursery Inspection
- Seed Inspection

SPECIAL AGRICULTURAL SERVICES

The Agriculture Department also provides other mandated services, including:

- Apiary Inspection
- Crop Statistics
- Sustainable Agriculture

ADMINISTRATIVE AND EDUCATION OUTREACH

The Agricultural Commissioner/Sealer of Weights and Measures is responsible for the administration of these programs. Staff also participate in a wide range of special projects intended to benefit Inyo/Mono citizens such as legislative process, public information, education outreach efforts, joint multi-agency and inter-county cooperative activities.

EASTERN SIERRA WEED MANAGEMENT AREA

This division of the Agricultural Commissioner's office consists of 15 federal, state, county, and local agencies and entities. The Eastern Sierra Weed Management Area is dedicated to the eradication and control of invasive plant species in Inyo and Mono Counties through the cooperation and coordination of participating entities. The Eastern Sierra Weed Management Area facilitates goals also through public outreach and education activities.

WEIGHTS AND MEASURES

Equity and fairness is the name of the game. A gallon of gasoline, a cord of firewood, a loaf of bread, or a pound of fruits or vegetables...any item purchased is sold by weight, measure, or count. We protect the public from purchasing goods that are short weight or measure, and we protect businesses from giving their products and profits away when they use devices that could be inaccurate. We also verify that prices are scanned correctly at the counter, petroleum products meet quality standards, and weighmasters provide their customers accurate weighing devices. The eight programs in this category include:

- Weight Verification
- Measurement Verification
- Petroleum
- Transaction Verification
- Electronic Meters
- Compressed Gas Meters
- Weighmaster
- Device Repairmen Regulation

See page 20 for more information on this division.

OWENS VALLEY MOSQUITO CONTROL PROGRAM

The purpose of this program is to provide the public with a consistent level of mosquito control that reduces the threat of disease transmission and the spread of large nuisance populations of mosquitoes. See page 21 for more information on this division.

"Agriculture... is the first in utility, and ought to be the first in respect."

-Thomas Jefferson





Counties of Inyo & Mono

Nathan D. Reade
Agricultural Commissioner
Director of Weights and Measures
207 W. South Street, Bishop, CA 93514
Telephone – (760) 873-7860 Fax – (760) 872-1610
Email – inyomonoag@gmail.com Web - www.inyomonoagriculture.com



Karen Ross, Secretary
California Department of Food and Agriculture

Brian Leahy, Director
California Department of Pesticide Regulation

The Honorable Board of Supervisors, County of Inyo

Matt Kingsley, Chairman

Jeff Griffiths
Mark Tillemans

Rick Pucci
Dan Totheroh

The Honorable Board of Supervisors, County of Mono

Tim Fesko, Chairman

Tim Alpers
Larry Johnston

Stacy Corless
Fred Stump

I am pleased to present the 2014 Inyo and Mono Counties' Annual Crop and Livestock Report. This report is prepared pursuant to California Food and Agriculture Code 2279, and is a statistical compilation of agriculture production in Inyo and Mono Counties. These values reflect **gross** agricultural production within the two counties, and do not represent net profit or loss.

The gross combined agricultural production values for Inyo and Mono Counties in 2014 totaled \$58,606,000, representing a decrease of nearly 21% from 2013 production values.

Drought conditions continue to significantly impact area agricultural businesses, and are the reason for the majority of decrease in value over last year. Livestock herd reductions began in 2011 with the drought and have continued each year thereafter. Herd sizes are now so small that rising beef prices no longer mask production losses when viewed in terms of dollars. Feeder cattle gain is also in sharp decline due to unavailability of pasture. Field crops continue to suffer as water supply diminishes. This year does not look to be the end of this downward trend as we enter another year with even lower runoff projections.

This report features both wool production as well as fruit and nut statistics for the first time for Inyo and Mono Counties. Additionally, Inyo county is now reporting nursery stock production.

I would like to thank our local agricultural producers and Oliver Hardwick of my staff for providing data and assisting with the compilation of this report.

Sincerely,

Nathan D. Reade
Agricultural Commissioner



INYO COUNTY GENERAL INFORMATION

County Seat: Independence
County Population: 18,546 (2010 census)
Land Area: 10,142 sq. miles
Population Density: 1.83 persons per sq. mile
Highest Elevation: 14,492 ft. (Mount Whitney)
Lowest Elevation: -282 ft. (Badwater, D.V.N.P.)

Unincorporated Areas

Big Pine
Cartago
Independence
Lone Pine
Olancho
Pearsonville
Shoshone
Tecopa

Incorporated Cities

Bishop

Average Climate

	Summer High	Winter Low
Bishop:	98°	22°
Death Valley:	115°	37°

Land Ownership

Federal:	92.0%
City of Los Angeles:	3.9%
State of California:	2.4%
Private:	1.7%



2014

INYO COUNTY

CROP AND LIVESTOCK STATISTICS

Corrals by Calvert Slough, Inyo County



LIVESTOCK						
ITEM	YEAR	HEAD	LIVEWEIGHT	UNIT	PRICE PER UNIT	TOTAL
Calves/Steers	2014	4,020	25,800	Cwt.	\$179.00	\$4,621,000
	2013	4,700	28,200		\$154.00	\$4,342,800
Calves/Heifers	2014	3,620	21,500	Cwt.	\$174.00	\$3,740,000
	2013	4,180	22,990		\$150.00	\$3,448,500
Cows	2014	1,830	20,600	Cwt.	\$121.00	\$2,494,000
	2013	1,620	17,820		\$114.00	\$2,031,480
Bulls	2014	167	2,760	Cwt.	\$116.00	\$320,000
	2013	180	2,520		\$109.00	\$274,680
Sheep and Lambs*	2014	3,431	3,960	Cwt.	\$125.00	\$496,000
	2013	4,275	4,275		\$115.00	\$491,625
Miscellaneous**	2014	~	~	~	~	\$36,000
	2013	~	~	~	~	\$1,929,600
TOTAL LIVESTOCK PRODUCTION:				2014		\$11,707,000
				2013		\$12,518,685

*Includes feeder lamb gain.

** Includes beef stocker gain, goats, hogs, and poultry.

LIVESTOCK & POULTRY PRODUCTS						
ITEM	YEAR	PRODUCTION	UNIT	PRICE PER UNIT	TOTAL	
Eggs	2014	4,300	Doz.	\$4.05	\$17,400	
	2013	2,500		\$4.00	\$10,000	
Wool*	2014	21,600	Lbs.	\$135.00	\$29,200	
	2013	~		~	~	~
TOTAL LIVESTOCK & POULTRY PRODUCTS:				2014		\$46,600
				2013		\$10,000

* Not previously reported.

ALL FIGURES MAY NOT ADD DUE TO ROUNDING

FRUIT & NUT CROPS							
ITEM	YEAR	BEARING ACRES	YIELD PER ACRE	TOTAL YIELD	UNIT	PRICE PER UNIT	TOTAL
Miscellaneous*	2014	32	~	~	~	~	\$188,000
	2013	45	~	~			\$287,000
TOTAL FRUIT & NUT CROP PRODUCTION:				2014			\$188,000
				2013			\$287,175

* Includes almonds, apples, apricots, blackberries, cherries, dates, figs, grapes (table), grapes (wine), nectarines, peaches, pears, pecans, persimmons, plums, pomegranates, raspberries, strawberries, and walnuts.

VEGETABLE CROPS							
ITEM	YEAR	HARVESTED ACREAGE	YIELD PER ACRE	TOTAL YIELD	UNIT	PRICE PER UNIT	TOTAL
Miscellaneous* **	2014	10	~	~	~	~	\$43,600
	2013	~	~	~			~
TOTAL VEGETABLE CROP PRODUCTION:				2014			\$43,600
				2013			~

* Not previously reported.

** Includes artichokes, beans, brassicas, carrots, cucumbers, eggplant, garlic, herbs, leafy greens, melons, onions, peppers, pumpkins, radishes, squash, sweet corn, tomatillos, tomatoes, and tubers.

Cattle grazing, Big Pine



FIELD CROPS							
ITEM	YEAR	HARVESTED ACREAGE	YIELD PER ACRE	TOTAL YIELD	UNIT	PRICE PER UNIT	TOTAL
Alfalfa Hay	2014	2,420	6.50	15,700	Ton	\$270.00	\$4,237,000
	2013	3,100	6.50	20,150		\$240.00	\$4,836,000
Pasture, Irrigated	2014	14,500	~	~	Acre	\$70.00	\$1,017,000
	2013	14,500	~	~		\$34.00	\$493,000
Pasture, Rangeland	2014	1,172,000	~	~	Acre	\$1.05	\$1,230,000
	2013	177,800	~	~		\$6.00	\$1,066,800
Miscellaneous*	2014	807	~	~	~	~	\$1,010,000
	2013	1,885	~	~		~	\$2,421,500
TOTAL FIELD CROP PRODUCTION:				2014			\$7,494,000
				2013			\$8,817,300

* Includes garlic, grain hay, sudangrass hay, and other hay.

NURSERY PRODUCTS			
ITEM	YEAR	ACREAGE	TOTAL
Nursery Stock*	2014	175	\$1,771,000
	2013	126	\$1,152,598
TOTAL NURSERY PRODUCTION:		2014	\$1,771,000
		2013	\$1,152,598

* Includes cacti and succulents, palms, and turf.

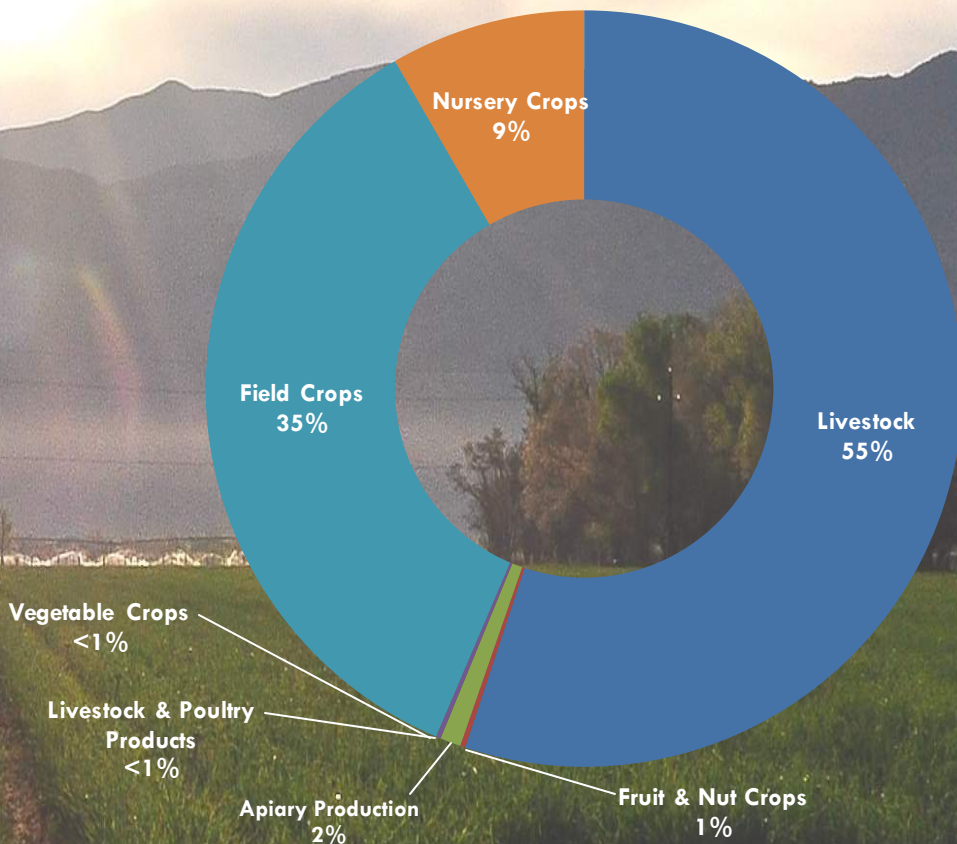
APIARY PRODUCTION					
ITEM	YEAR	PRODUCTION	UNIT	PRICE PER UNIT	TOTAL
Honey	2014	129,000	Lbs.	\$3.00	\$387,000
	2013	824,850		\$3.47	\$2,862,230
Miscellaneous*	2014	~	~	~	\$21,600
	2013	~	~	~	~
TOTAL APIARY PRODUCTION:				2014	\$409,000
				2013	\$2,862,230

* Includes beeswax and pollen.

ALL FIGURES MAY NOT ADD DUE TO ROUNDING

INYO COUNTY TOTALS		
	2013	2014
LIVESTOCK	\$12,518,685	\$11,707,000
LIVESTOCK & POULTRY PRODUCTS	\$10,000	\$46,600
FRUIT & NUT CROPS	\$287,175	\$188,000
VEGETABLE CROPS	~	\$43,600
FIELD CROPS	\$8,817,300	\$7,494,000
NURSERY CROPS	\$1,152,598	\$1,771,000
APIARY PRODUCTION	\$2,862,230	\$409,000
TOTALS	\$25,647,988	\$21,659,000

INYO COUNTY AGRICULTURAL PRODUCTION



Garlic, Big Pine



MONO COUNTY GENERAL INFORMATION

County Seat: Bridgeport
 County Population: 14,202 (2010 census)
 Land Area: 3,044 sq. miles
 Population Density: 4.67 persons per sq. mile
 Highest Elevation: 14,242 ft. (White Mountain)

Unincorporated Areas

- Benton
- Bridgeport
- Chalfant Valley
- Coleville
- Hammil Valley
- June Lake
- Lee Vining
- Tom's Place
- Topaz
- Walker

Incorporated Cities

- Mammoth Lakes

Average Climate

	Summer High	Winter Low
Bridgeport:	81°	8°
Chalfant Valley:	98°	22°

Land Ownership

Federal:	84.7%
State of California:	3.6%
City of Los Angeles:	3.2%
Private:	6.5%





2014

MONO COUNTY
CROP AND LIVESTOCK STATISTICS

Hammil Valley from Chidago Canyon Road



LIVESTOCK						
ITEM	YEAR	HEAD	LIVEWEIGHT	UNIT	PRICE PER UNIT	TOTAL
Calves/Steers	2014	4,000	26,000	Cwt.	\$179.00	\$4,654,000
	2013	6,480	38,880		\$154.00	\$5,987,520
Calves/Heifers	2014	3,400	20,400	Cwt.	\$174.00	\$3,550,000
	2013	5,500	30,250		\$150.00	\$4,537,500
Cows	2014	1,800	19,800	Cwt.	\$121.00	\$2,396,000
	2013	2,230	24,530		\$114.00	\$2,796,420
Bulls	2014	200	3,200	Cwt.	\$116.00	\$371,000
	2013	250	3,500		\$109.00	\$381,500
Sheep and Lambs*	2014	14,508	16,700	Cwt.	\$125.00	\$2,096,000
	2013	17,955	17,955		\$115.00	\$2,064,830
Miscellaneous**	2014	~	~	~	~	\$1,276,000
	2013	~	~	~	~	\$7,897,200
TOTAL LIVESTOCK PRODUCTION:				2014	\$14,343,000	
				2013	\$23,664,970	

* Includes feeder lamb gain.

** includes beef stocker gain, goats, hogs, and poultry.

LIVESTOCK & POULTRY PRODUCTS					
ITEM	YEAR	PRODUCTION	UNIT	PRICE PER UNIT	TOTAL
Wool*	2014	91,400	Lbs.	\$135.00	\$123,000
	2013	~		~	~
TOTAL LIVESTOCK & POULTRY PRODUCTS:				2014	\$123,000
				2013	~

* Not previously reported.

ALL FIGURES MAY NOT ADD DUE TO ROUNDING

FRUIT & NUT CROPS							
ITEM	YEAR	BEARING ACRES	YIELD PER ACRE	TOTAL YIELD	UNIT	PRICE PER UNIT	TOTAL
Miscellaneous*	2014	18	~	~	~	~	\$44,100
	2013	25	~	~		~	\$47,775
TOTAL FRUIT & NUT CROP PRODUCTION:				2014			\$44,100
				2013			\$47,775

* Includes grapes (wine), pome fruit, and stone fruit.



Cattle Grazing near Sonora Junction



FIELD CROPS and FOREST PRODUCTS

FIELD CROPS							
ITEM	YEAR	HARVESTED ACREAGE	YIELD PER ACRE	TOTAL YIELD	UNIT	PRICE PER UNIT	TOTAL
Alfalfa Hay	2014	8,100	6.50	52,700	Ton	\$265.00	\$13,952,000
	2013	10,200	6.50	66,300		\$240.00	\$15,912,000
Pasture, Irrigated	2014	43,600	~	~	Acre	\$70.00	\$3,049,000
	2013	44,550	~	~		\$40.00	\$1,782,000
Pasture, Rangeland	2014	1,060,000	~	~	Acre	\$1.33	\$1,410,000
	2013	68,400	~	~		\$8.00	\$547,200
Miscellaneous*	2014	3,220	~	~	~	~	\$3,938,000
	2013	5,375	~	~		~	\$6,526,200
TOTAL FIELD CROP PRODUCTION:					2014		\$22,349,000
					2013		\$24,767,400

* Includes garlic, grain hay, sudangrass hay, other hay, and potato.

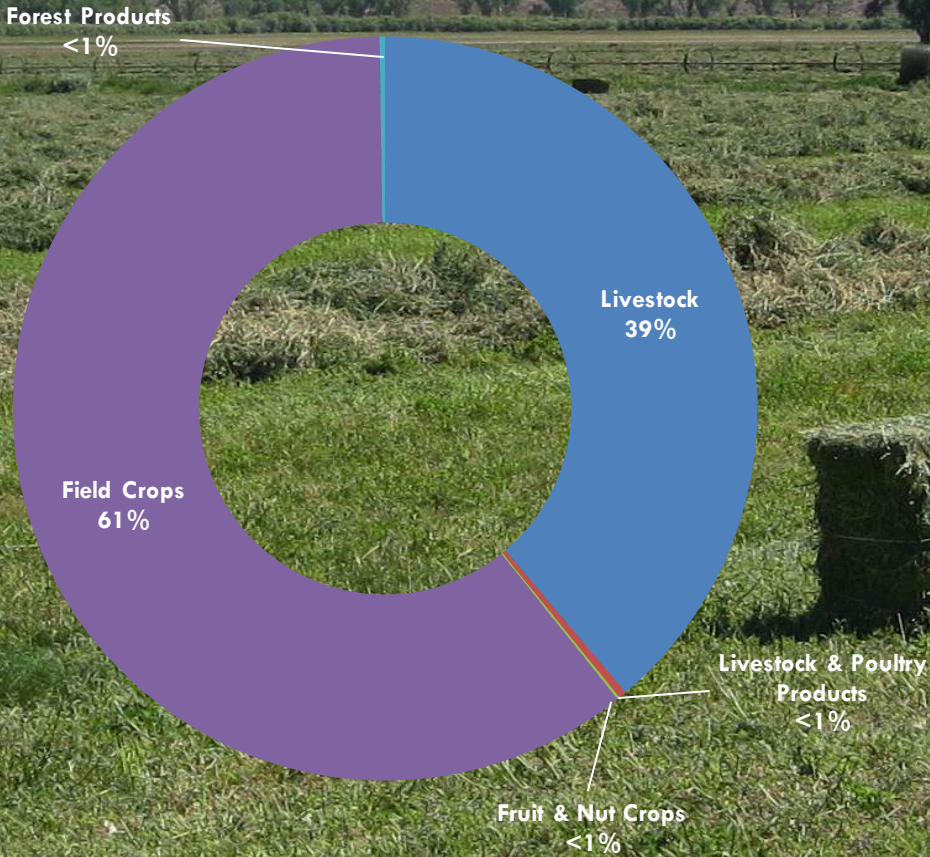
FOREST PRODUCTS			
ITEM	YEAR	TOTAL	
Timber and Firewood	2014	\$87,400	
	2013	\$23,280	
TOTAL FOREST PRODUCTS:		2014	\$87,400
		2013	\$23,280

ALL FIGURES MAY NOT ADD DUE TO ROUNDING

MONO COUNTY TOTALS

	2013	2014
LIVESTOCK	\$23,664,970	\$14,343,000
LIVESTOCK & POULTRY PRODUCTS	~	\$123,000
FRUIT & NUT CROPS	\$47,775	44,100
FIELD CROPS	24,767,400	\$22,349,000
FOREST PRODUCTS	\$23,280	\$87,400
TOTALS	48,503,425	\$36,947,000

MONO COUNTY AGRICULTURAL PRODUCTION



Freshly cut hay, Topaz

MONO COUNTY TOTALS



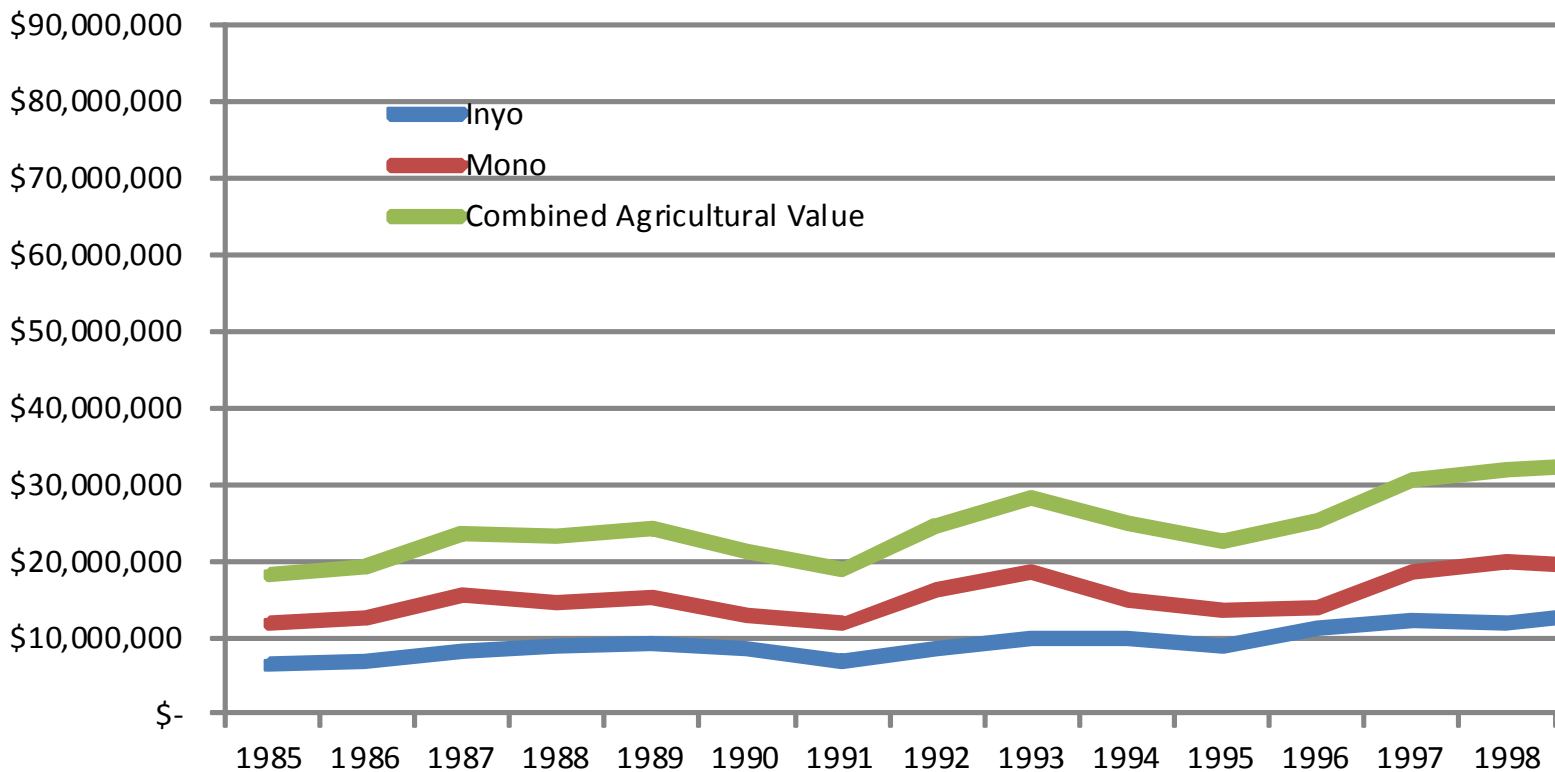
COMPARISON SUMMARY

2010-2014

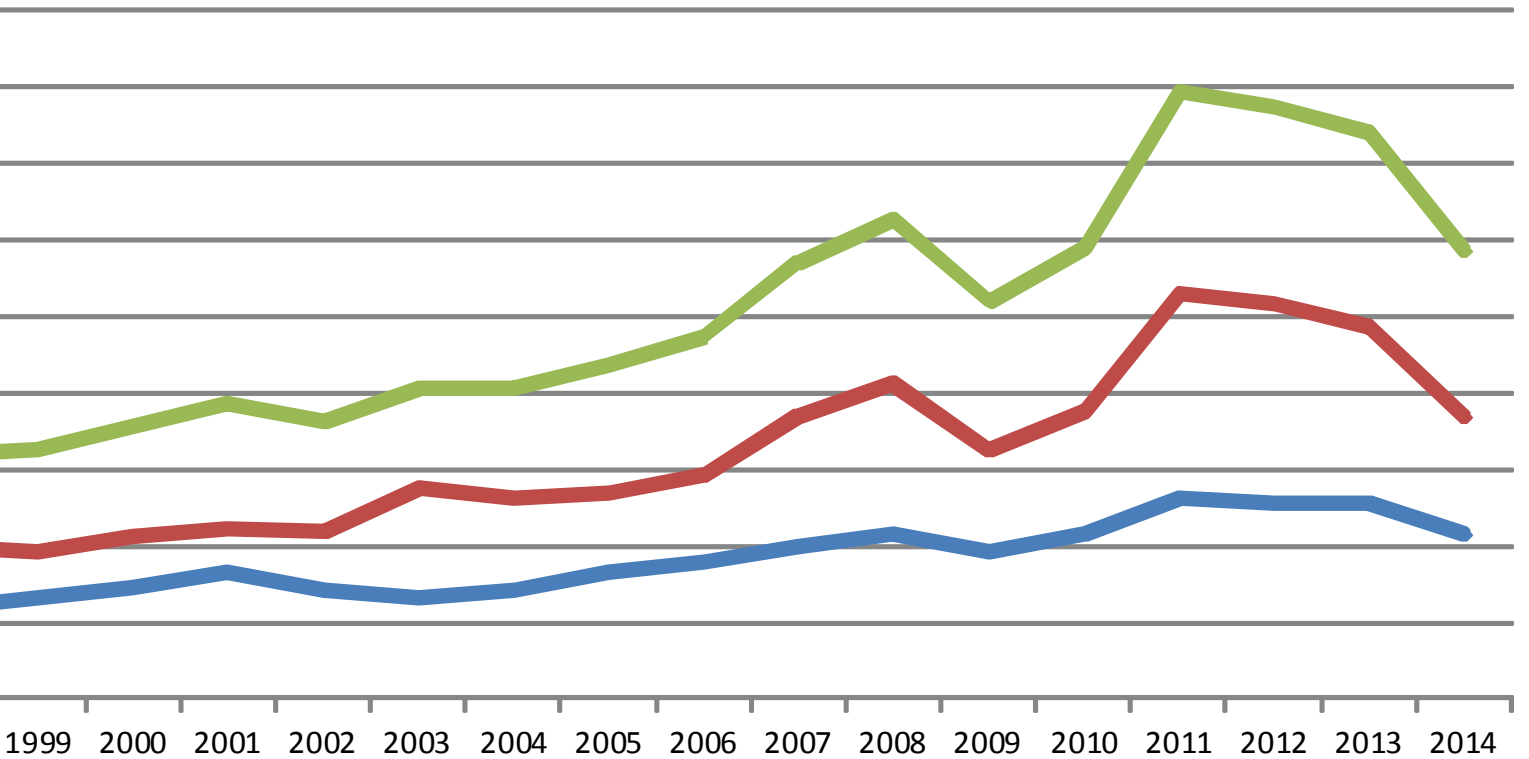
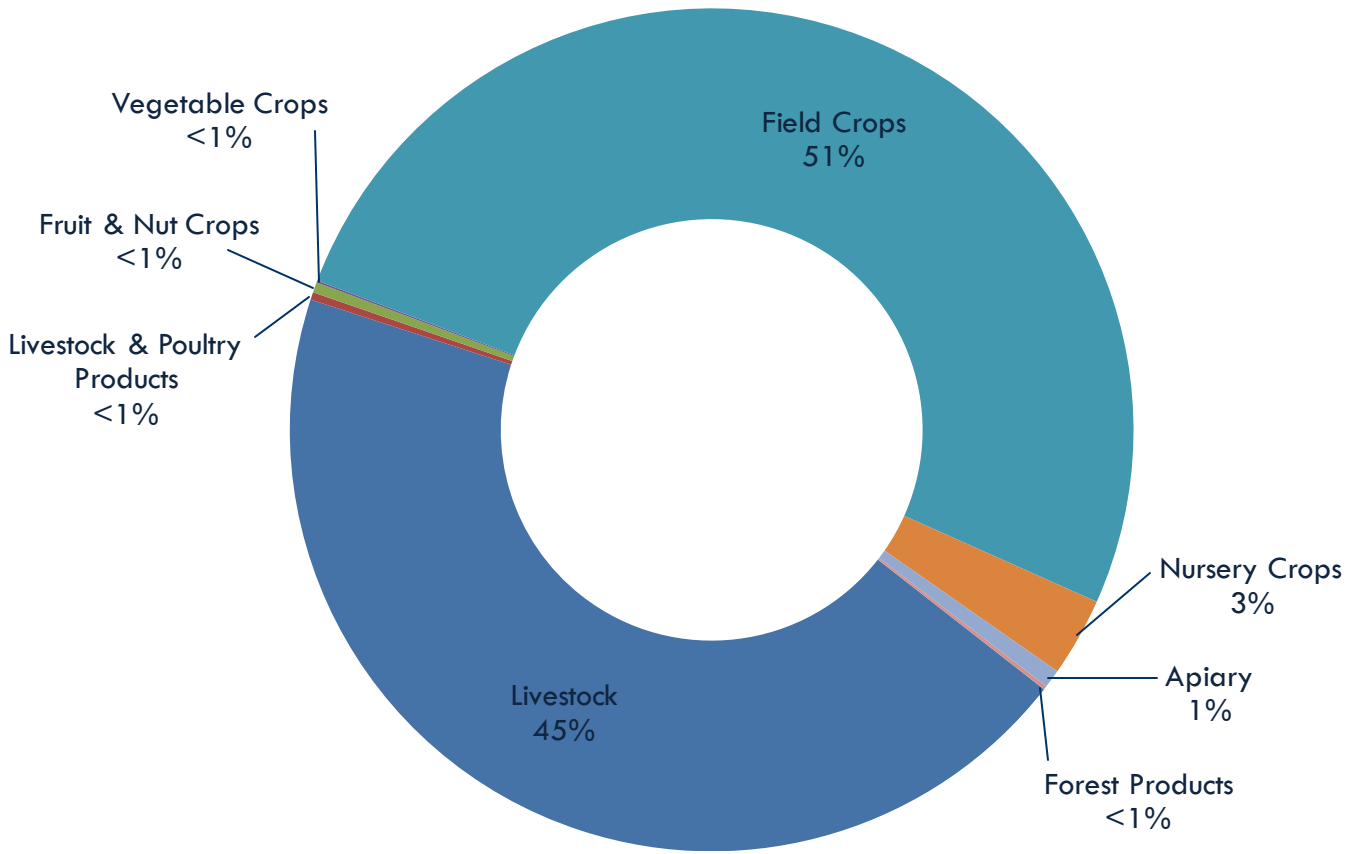


	2010	2011	2012	2013	2014
INYO COUNTY TOTALS	\$21,546,770	\$26,269,556	\$25,693,437	\$25,647,988	\$21,659,000
MONO COUNTY TOTALS	\$37,508,055	\$53,143,406	\$51,587,860	\$48,503,425	\$36,947,000
COMBINED TOTALS	\$59,054,825	\$79,412,962	\$77,281,297	\$74,151,413	\$58,606,000

30 YEAR COMPARISON



COMBINED AGRICULTURAL PRODUCTION



FARMER'S MARKET

CERTIFIED FARMERS MARKETS:

25 growers participated in the 2014 Farmers Markets.

Locations included:

Mammoth Lakes

Bishop

Independence

Lone Pine

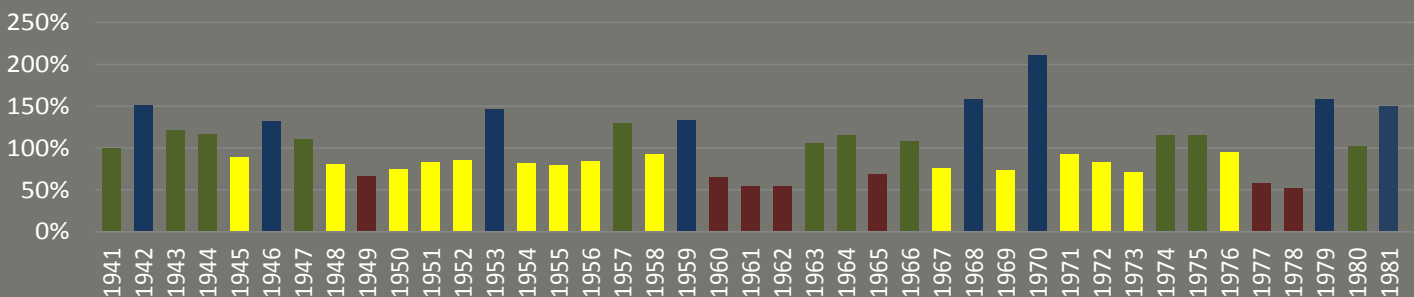


Commodities sold included:

basil, chervil, chives, cilantro, dill, marjoram, parsley, rosemary, sage, tarragon, thyme, lavender, oregano, lemongrass, mint, mustard, paprika, spinach, sunflower, corn, eggplant, tomato, squash, cucumber, peppers, green onions, potatoes, pumpkins, okra, onions, beets, garlic, asparagus, artichoke, celery, carrots, radishes, rutabaga, leek, lettuce, broccoli, cauliflower, kale, arugula, sweet potatoes, Swiss chard, bok choy, cabbage, collard, Brussels sprouts, zucchini, shallots, tomatillos, turnip, grapes, apples, peaches, pears, nectarines, apricots, cherries, plums, persimmons, pomegranate, pluot, rhubarb, figs, watermelon, cantaloupe, honeydew, raspberries, blackberries, boysenberries, strawberries, peas, sweet peas, various bean varieties, almonds, walnuts, cut flowers, honey, and eggs.



EASTERN SIERRA RUNOFF CHART



SUSTAINABLE AGRICULTURE AND OUTREACH

INVASIVE PLANT TARGETS

PEST	AGENT/MECHANISM	NUMBER OF SITES	GROSS ACRES
Puncturevine	Biological Control	12 sites	~
Dalmatian Toadflax	Mechanical	2 sites	220
Yellow Starthistle	Mechanical	1 site	10
Russian Knapweed	Herbicide	3 sites	100
Canada Thistle	Herbicide	8 sites	400
Spotted Knapweed	Herbicide	3 sites	4
Halogeton	Mechanical	5 sites	4,400
Scotch Thistle	Herbicide	8 sites	1,311
Camelthorn	Herbicide	1 site	40
Saltcedar	Herbicide	1 site	80
Perennial Pepperweed	Herbicide	53 sites	12,000

PEST EXCLUSION

Exotic and/or target pests in incoming plant material via UPS, FedEx, and US Mail:

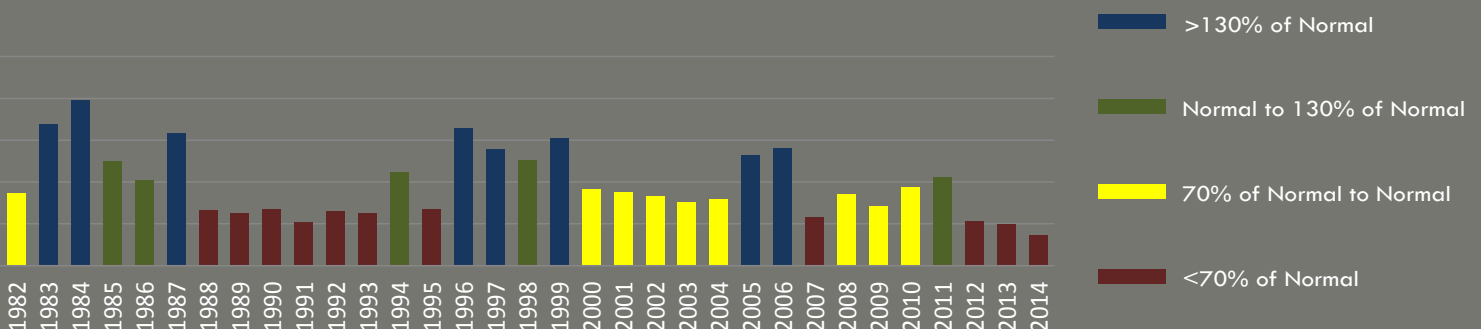
1000+ Shipments Inspected

OUTREACH PROGRAM

During 2014, the Inyo/Mono Counties' Agriculture Department conducted:

- 2 pesticide safety seminars with 120 professional card holders and private applicators attending, to meet California state continuing education requirements;
- 2 educational workshops for local groups;
- 2 meetings with local Farmer's Markets;
- Participation with the Owens Lake Committee and Integrated Regional Water Management Planning Group to resolve major water issues in the Owens Valley.

The Department's inspection surveillance area, which encompasses over 10,000 square miles, provided outreach from northern Mono County, including several California and Nevada field crop growers located in the Antelope Valley area, to the southern tip of Inyo County, including a large commercial turf grass farm in the Sandy Valley, near Las Vegas, Nevada. The Inyo/Mono Agricultural Commissioner's office is tasked with the surveillance of 50% of the California/Nevada border for pests that could endanger the agricultural industry of California.



WEIGHTS AND MEASURES

DEVICE INSPECTION PROGRAM

Over 1,250 devices were inspected in 2014 to ensure accuracy within California state tolerances. These devices included:

1,001 retail fuel meters

167 retail scales

44 livestock scales

24 vehicle scales

8 hopper scales

8 misc. measuring devices

We are responsible for inspection, certification, or condemnation of all commercially used meters (retail motor fuel, propane/vapor, and electric), scales (aggregate and cement hoppers, vehicle, livestock, computing, platform and spring scales); and any other type of device that is used to weigh or measure to determine a value for the purpose of sales. Enforcement actions can include issuance of citations initiating prosecution of violations. Of the 1,250+ devices inspected, 19 Notice of Violations were issued. All consumer complaints received by the Inyo/Mono Counties' Weights and Measures Department resulted in further inspections throughout the year. Regular inspections protect consumers from misrepresentation and maintain fair competition between sellers.

PETROLEUM PROGRAM

We ensure the quality of petroleum products sold within the two Counties including; sampling of fuels, inspection and investigation of complaints. We also oversee all commercial advertisements of such products including price signs and labeling.

QUALITY PACKAGE INSPECTIONS

We inspect pre-packaged commodities in retail and wholesale facilities to determine proper weights, count or volume. We also verify proper sales equipment involving scanners, performing test purchases to insure accurate charges.

WEIGHMASTER ENFORCEMENT

Weighmaster licenses are issued through our office to persons or entities that sell bulk commodities. Enforcement of weighmaster laws ensures that these transactions are accurate.

DEVICE REPAIRMAN REGULATION

Anyone who installs or repairs a weighing or measuring device in Inyo or Mono Counties must register with our office and inform our office when work takes place. This ensures that devices are not tampered with and transaction equity.



"Weights and measures may be ranked among the necessities of life to every individual of human society. They enter into the economical arrangements and daily concerns of every family. They are necessary to every occupation of human industry; to the distribution and security of every species of property; to every transaction of trade and commerce; to the labors of the husbandman; to the ingenuity of the artificer; to the studies of the philosopher; to the researches of the antiquarian; to the navigation of the mariner, and the marches of the soldier; to all the exchanges of peace, and all the operations of war. The knowledge of them, as in established use, is among the first elements of education, and is often learned by those who learn nothing else, not even to read and write. This knowledge is riveted in the memory by the habitual application of it to the employments of men throughout life."

John Quincy Adams

OWENS VALLEY MOSQUITO ABATEMENT

WHAT IS THE MOSQUITO CONTROL PROGRAM?

The purpose of the program is to control mosquito populations throughout the Owens Valley from Olancho to Round Valley so that these pests and their associated diseases are abated adequately.



MONITORING

The Owens Valley Mosquito Abatement Program (OVMAP) conducts surveillance to determine mosquito populations using several methods. Mosquito traps are deployed in several locations throughout the Owens Valley, and are checked frequently to determine level of adult mosquito populations. Disease monitoring is component of this trapping effort, and insects caught in traps are sent to sample for the presence of certain diseases that mosquitos are known to spread. Complaints are logged and responded to, creating records that can also help with monitoring efforts. At times, staff will travel to areas where complaints are high and record landing rates of mosquitos to further gauge population density.

BIOCONTROL

Mosquito Fish - The mosquito fish have been one of the most effective non-insecticidal and non-chemical methods of controlling mosquitoes for over eighty years. They breed throughout the summer and new broods are produced at intervals of about six weeks, with 50 to 100 young in a single brood. They are ready to begin the work of destroying mosquito larvae at once. Mosquito fish can eat mosquito larvae as fast as the larvae hatch from eggs, as many as 100 per day. Mosquito fish live 2-3 years and can tolerate a wide range of temperatures.

Larvaciding - Routine larvaciding of many hundreds of mosquito sources each week prevent immature mosquito larvae from reaching the flying and biting adult stage. This preferred first option for killing mosquitos is the cheapest and most effective method.

ADULTICIDING

When larvaciding does not control mosquito populations adequately, OVMAP conducts adulticiding measures to protect our local communities from irritating insect bites and the potential for spreading of disease.

PUBLIC OUTREACH and CULTURAL/ENVIRONMENTAL CONTROL

Outreach to residents about altering or removing conditions that best suit mosquito breeding is another effective tool in the OVMAP toolbox. These controls include proper irrigation practices, pool maintenance, and even making sure small containers or tires stored outside do not fill with stagnant water. Reducing the habitat conducive to mosquito breeding in the very areas where we live is a large step toward fewer itchy bites.



Counties of Inyo and Mono
Department of Agriculture and Weights & Measures
207 W South Street
Bishop, CA 93514

